
Eight-channel Darlington Drivers

FEATURES

Improved replacement for the ULN2803
Fast turn-on and turn-off.
TTL/CMOS compatible.

APPLICATIONS

- Stepping Motor Driver.
- Relay Driver.
- LED Driver.
- Solenoid Driver.

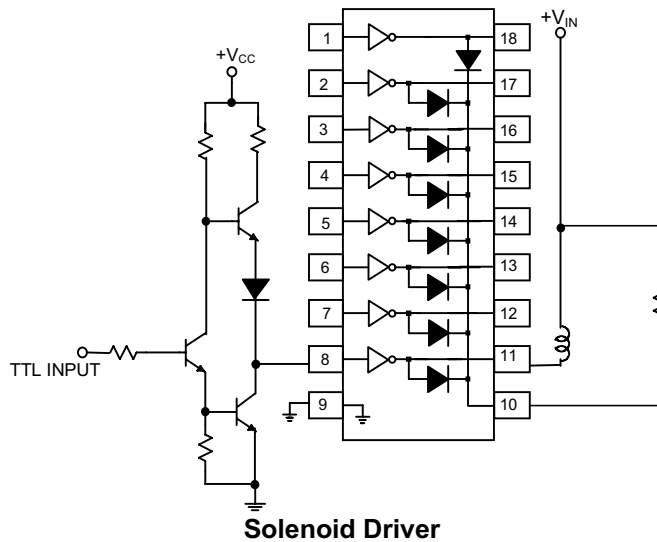
DESCRIPTION

Manufactured with the standard bipolar process, the SS62803 is a high-voltage, high-current 8-channel Darlington array, with each of the output transistors capable of sinking peak load current of 500mA and capable of withstanding at least 50V in the OFF state.

The SS62803 has a 2.7K Ω series base resistor to each Darlington pair and thus allows operation directly with TTL or CMOS logic circuitry operating at a supply voltage of 5V. Outputs of the drivers can be paralleled for higher load current capability. These make the SS62803 ideally suited for numerous interfaces between low-level logic circuitry and high-power peripheral loads, particularly those beyond the capabilities of standard logic buffers. Typical loads include relays, solenoids, stepping motors, heaters, multiplexed LED, and incandescent displays.

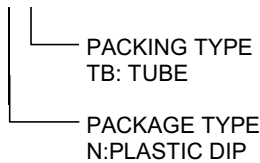
The SS62803 features open collector outputs and integral diodes for inductive load transient suppression.

TYPICAL APPLICATION CIRCUIT



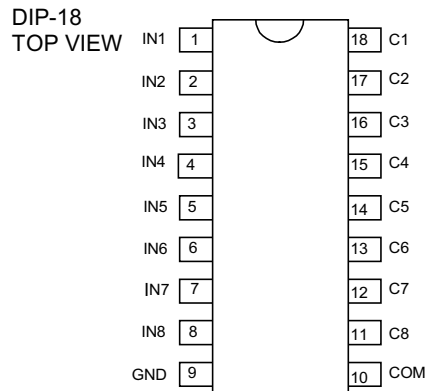
ORDERING INFORMATION

SS62803CXXX



Example: SS62803CNTB
 → in DIP-18 Package & Tube Packing Type

PIN CONFIGURATION



ABSOLUTE MAXIMUM RATINGS (TA=25°C)

Output Voltage	50V
Input Voltage	30V
Continuous Collector Current	500mA
Continuous Base Current	25mA
Power Dissipation, (One Darlington Pair)	1.0W
(Total Package)	2.25W
Operating Ambient Temperature Range	-20°C~ 85°C
Storage Temperature Range	-65°C~ 150°C

ELECTRICAL CHARACTERISTICS (T_A=25°C, unless otherwise specified.)

PARAMETERS	TEST CONDITIONS	SYMBOL	MIN.	TYP.	MAX.	UNIT
Output Leakage Current	V _{CE} =50V, T _A =25°C V _{CE} =50V, T _A =70°C, Fig. 1	I _{CEX}			30 100	μA
Collector-Emitter Saturation Voltage	I _C =100mA, I _B =250μA I _C =200mA, I _B =350μA I _C =350mA, I _B =500μA, Fig. 2	V _{CE(SAT)}		0.8 0.9 1.0	1.1 1.3 1.5	V
Input Current	V _{IN} =3.85V, Fig. 3 I _C =500μA, T _A =70°C, Fig. 4	I _{IN(ON)} I _{IN(OFF)}		0.93 50	1.35 65	mA μA
Input voltage	V _{CE} =2.0V, I _C =200mA V _{CE} =2.0V, I _C =250mA V _{CE} =2.0V, I _C =300mA, Fig. 5	V _{IN(ON)}			2.3 2.4 2.5	V
Input Capacitance		C _{IN}		15	25	pF
Clamp Diode Leakage Current	V _R =50V, T _A =25°C V _R =50V, T _A =70°C, Fig. 6	I _R			30 100	μA
Clamp Diode Forward Voltage	I _F =350mA Fig. 7	V _F		1.4	1.8	V
Turn-On Delay	0.5 V _{IN} to 0.5 V _{OUT} , Fig. 8	T _{ON}		0.1	0.5	μS
Turn-off Delay	0.5 V _{IN} to 0.5 V _{OUT} , Fig. 8	T _{OFF}		0.2	0.8	μS

TEST CIRCUITS

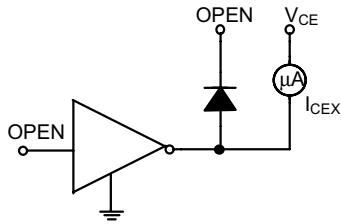


Fig. 1

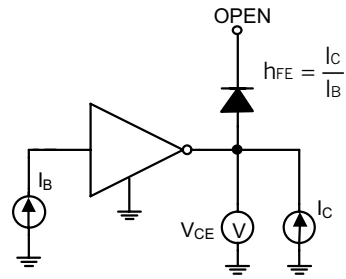


Fig. 2

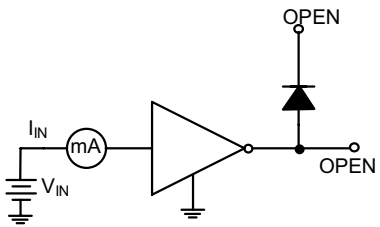


Fig. 3

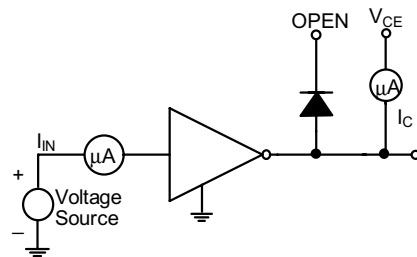


Fig. 4

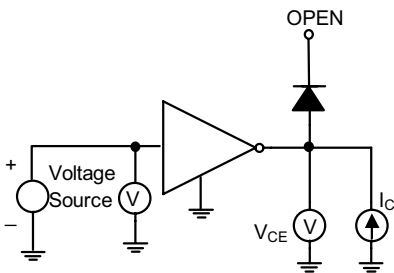


Fig. 5

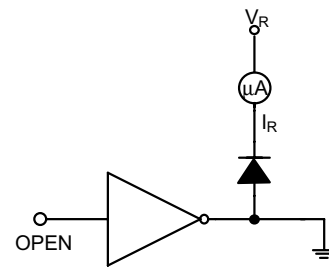


Fig. 6

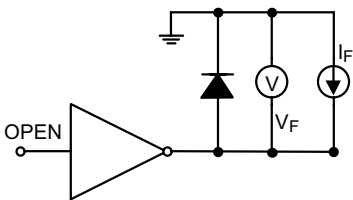
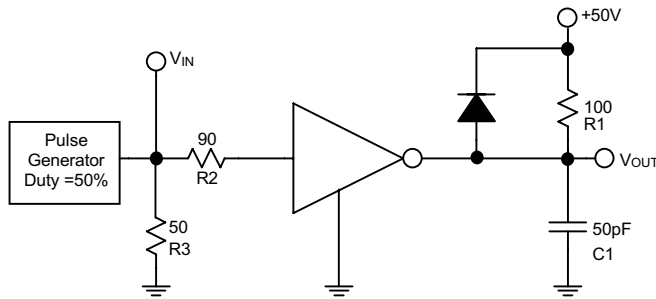
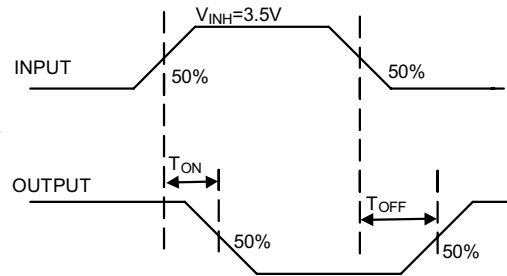
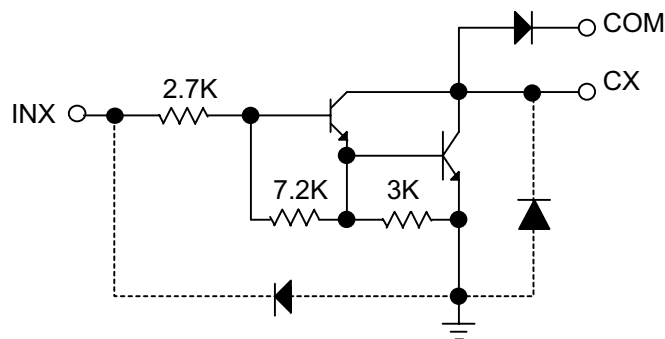


Fig. 7

TEST CIRCUITS (Continued)

Fig. 8

Fig. 9 Test Circuit of Fig. 8
PIN DESCRIPTIONS

- PIN 1~8: IN1~IN8 - Control signal input pin.
- PIN 9: GND - Power ground.
- PIN 10: COM - The output pin (Cathode) of freewheeling diode.
- PIN 11~18: C1~C8 - Each of the pins may individually sink load current from some controlled circuits. The sunk current should be under 500mA in a continuous mode.

DRIVER CIRCUIT


SWITCHING DELAY

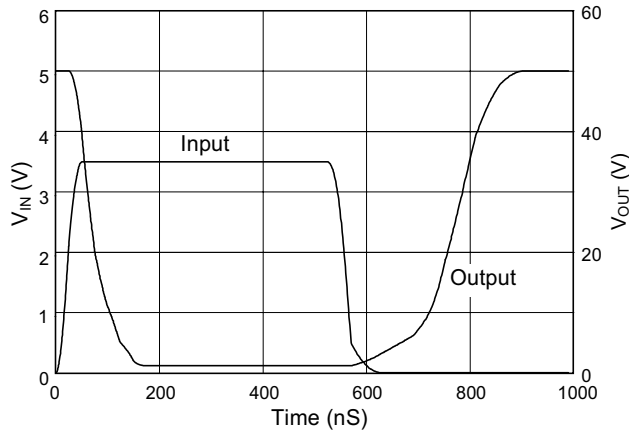


Fig. 10 Switching Delay

ALLOWABLE AVERAGE POWER DISSIPATION

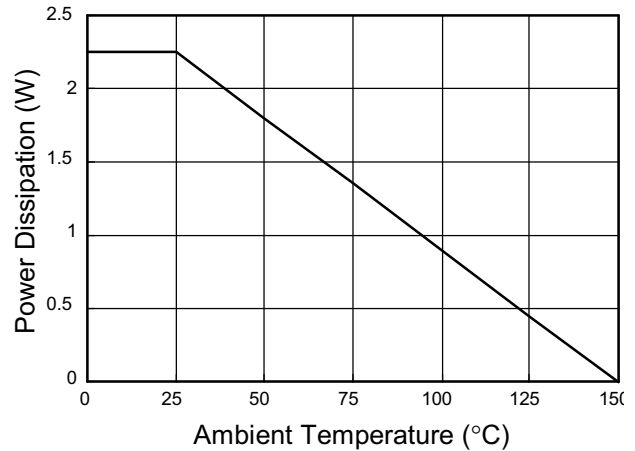
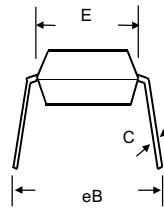
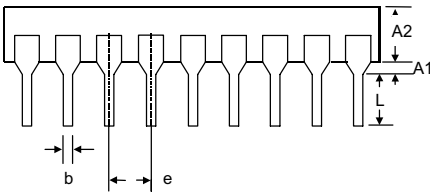
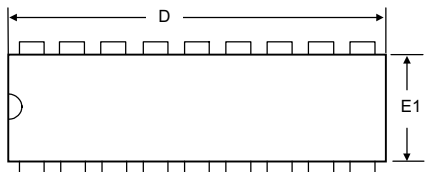


Fig. 11 Power Dissipation vs. Ambient Temperature

PHYSICAL DIMENSIONS

- 18 LEAD PLASTIC DIP (unit: mm)



SYMBOL	MIN	MAX
A1	0.381	—
A2	2.92	4.96
b	0.35	0.56
C	0.20	0.36
D	22.35	23.37
E	7.62	8.26
E1	6.09	7.12
e	2.54 (TYP)	
eB	—	10.92
L	2.92	3.81

Information furnished by Silicon Standard Corporation is believed to be accurate and reliable. However, Silicon Standard Corporation makes no guarantee or warranty, express or implied, as to the reliability, accuracy, timeliness or completeness of such information and assumes no responsibility for its use, or for infringement of any patent or other intellectual property rights of third parties that may result from its use. Silicon Standard reserves the right to make changes as it deems necessary to any products described herein for any reason, including without limitation enhancement in reliability, functionality or design. No license is granted, whether expressly or by implication, in relation to the use of any products described herein or to the use of any information provided herein, under any patent or other intellectual property rights of Silicon Standard Corporation or any third parties.